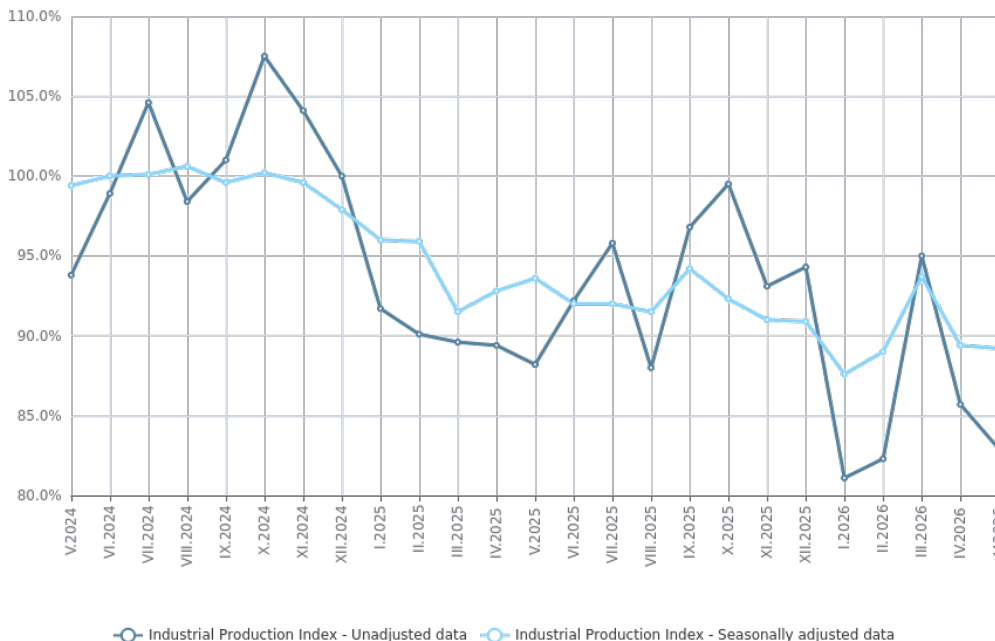




INDUSTRIAL PRODUCTION INDICES - MAY 2026

The index of industrial production in May 2026 decreased by 0.2% compared to the previous month. The data are preliminary and seasonally adjusted. Compared to May 2025, a decline of 4.8% was registered in the calendar-adjusted index of industrial production.

Figure 1. Industrial Production Indices (2021 = 100)



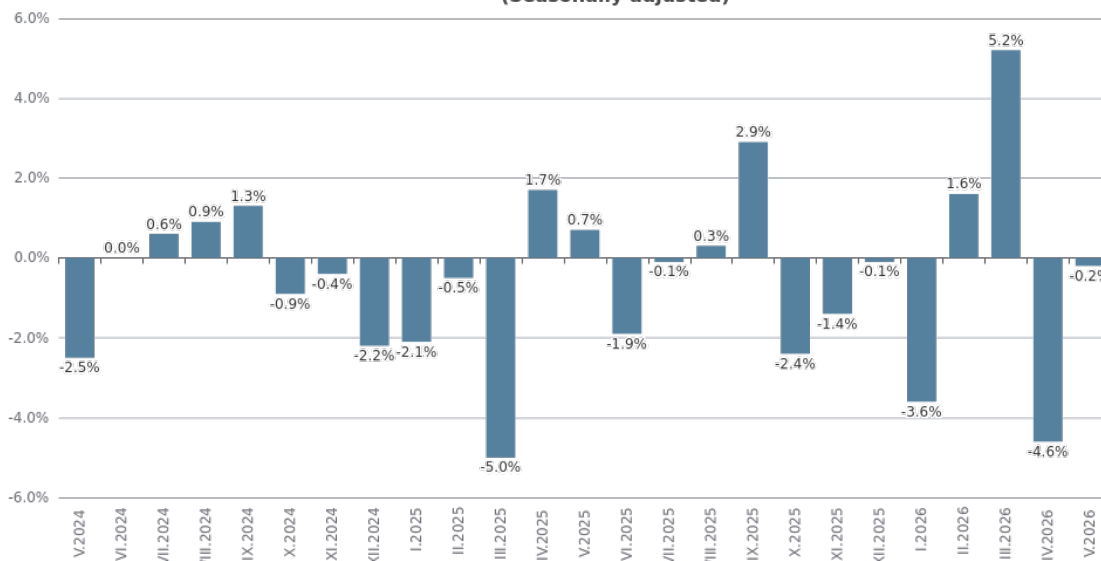
Monthly changes

In May 2026, compared to April 2026, a decrease was observed in the manufacturing industry - by 0.8%, while an increase was registered in the electricity, gas, steam and air conditioning supply - by 9.2%, and in the mining and quarrying industry - by 1.7%.

A more significant decrease in the manufacturing industry was recorded in manufacture of textiles - by 8.8%, in the printing and reproduction of recorded media - by 7.5%, and in the manufacture of chemicals and chemical products - by 6.9%.

A growth was registered in the manufacture of electrical equipment - by 7.2%, in the manufacture of wood and of products of wood and cork, except furniture; manufacture of articles of straw and plaiting materials - by 6.8%, and in the manufacture of other transport equipment - by 6.5%.

Figure 2. Changes of Industrial Production Indices compared to the previous month (Seasonally adjusted)



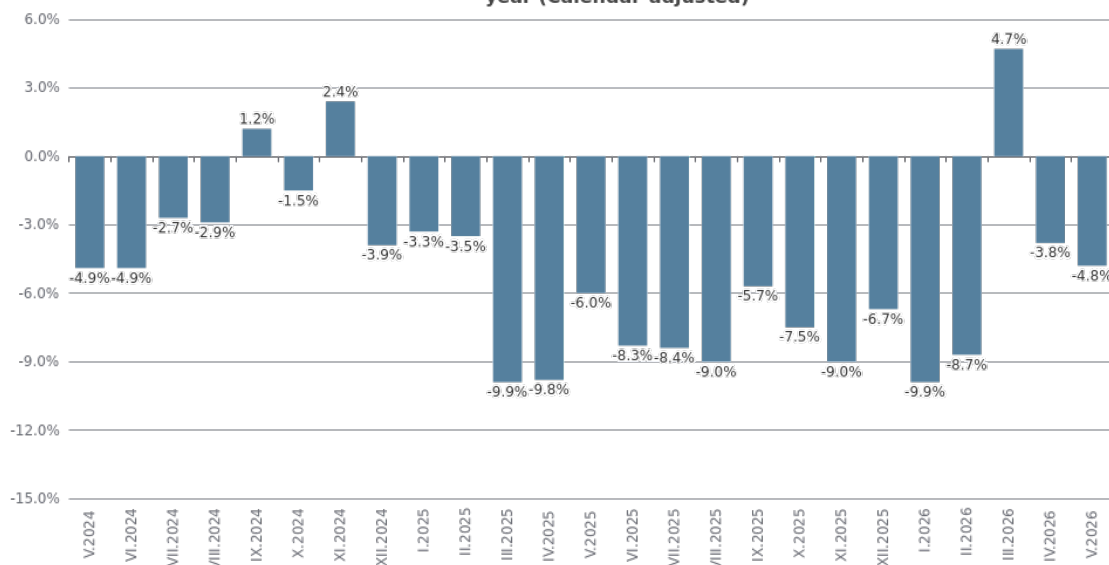
Annual changes

On an annual basis, a drop in industrial production, calculated from calendar-adjusted data, was recorded in the mining and quarrying industry - by 33.0%, in the manufacturing industry - by 3.9%, while an increase was registered in the in the electricity, gas, steam and air conditioning supply - by 8.8%.

In the manufacturing industry, significant decrease compared to May 2025 was registered in: manufacture of fabricated metal products, except machinery and equipment - by 32.1%, manufacture of leather and related products - by 31.8%, and in manufacture of motor vehicles, trailers and semi-trailers - by 23.7%.

A rise was recorded in the manufacture of electrical equipment - by 23.8%, and in the manufacture of basic pharmaceutical products and pharmaceutical preparations - by 15.7%.

Figure 3. Changes of the Industrial Production Indices compared to the same month of the previous year (Calendar-adjusted)



Methodological notes

The monthly indices of industrial production are calculated in accordance with the requirements of Regulation (EU) 2019/2152 of the European Parliament and of the Council on European Business Statistics.

In relation to the membership of Bulgaria in the euro area from the 1st of January 2026, the National Statistical Institute (NSI) is obliged to produce and publish Industrial Production Indices on the Non-domestic Market in the euro area and in the non-euro area. This is valid for all member states of the euro area.

The Monthly Industrial Production and Industrial Turnover Indices measure changes in production and turnover values of industrial enterprises. This information can be used to assess the current economic development and for short-term forecasts. Indices do not measure the actual production level; they aim to measure the average change in the value of production between two points in time. Indices are compiled based on information collected through a representative sampling survey on industrial enterprises. The sample covers enterprises with an annual turnover of more than 97% of the total turnover in the industry.

The Industrial Production Indices are calculated at a constant base year, that is to say they are weighted with the structure of the value added at factor costs in the base year.

Seasonal adjustment is a statistical method which eliminates the seasonal component of the time series.

Calendar adjustment is an adjustment for variations in the monthly data, caused by calendar effects, the different number of calendar and working days in the months, national holidays and outliers (for example, the presence of more non-working days in May could contribute to the decline in production in some activities).

Changes of Industrial Production Indices compared to the previous month							
							(Per cent)
Economic activities	NACE.BG - 2008	XII.2025	I.2026	II.2026	III.2026	IV.2026	V.2026*
Industry	B_TO_E36	-0.1	-3.6	1.6	5.2	-4.6	-0.2
Mining and quarrying	B	-14.8	-18.8	-5.8	-2.0	-9.2	1.7
Mining of coal and lignite	B05
Extraction of crude petroleum and natural gas	B06
Mining of metal ores	B07	-12.4	-13.5	-14.7	-2.8	-10.7	1.6
Other mining and quarrying	B08	6.1	-2.8	-0.5	7.5	-1.8	-4.4
Mining support service activities	B09
Manufacturing	C	0.2	-4.3	4.2	2.1	-3.9	-0.8
Manufacture of food products	C10	-0.1	-3.6	1.4	8.9	-2.3	-2.4
Manufacture of beverages	C11	4.8	-5.4	4.5	-2.4	-5.9	1.6
Manufacture of tobacco products	C12	25.2	12.0	-4.5	-5.7	0.4	2.7
Manufacture of textiles	C13	-8.2	-12.5	17.7	-8.5	6.0	-8.8
Manufacture of wearing apparel	C14	4.6	-1.4	-0.8	-6.7	7.5	-3.6
Manufacture of leather and related products	C15	-0.7	-30.4	8.8	-3.3	2.0	-1.7
Manufacture of wood and of products of wood and cork, except furniture; manufacture of articles of straw and plaiting materials	C16	5.4	3.3	-12.7	11.5	-6.7	6.8
Manufacture of paper and paper products	C17	1.1	3.7	1.2	4.2	-2.1	-5.2
Printing and reproduction of recorded media	C18	7.3	-3.7	5.0	-1.1	8.3	-7.5
Manufacture of coke and refined petroleum products	C19
Manufacture of chemicals and chemical products	C20	2.6	4.6	-1.4	0.2	1.5	-6.9
Manufacture of basic pharmaceutical products and pharmaceutical preparations	C21	-11.3	7.8	5.9	7.3	-5.1	0.4
Manufacture of rubber and plastic products	C22	-6.2	5.8	1.2	0.6	0.3	2.2
Manufacture of other non-metallic mineral products	C23	-7.0	-5.7	1.8	4.1	2.1	2.5
Manufacture of basic metals	C24	-10.8	12.4	3.4	-5.9	-2.9	0.7
Manufacture of fabricated metal products, except machinery and equipment	C25	8.6	-0.5	1.8	-8.1	-17.4	-5.1
Manufacture of computer, electronic and optical products	C26	14.1	-17.5	1.8	23.1	-20.5	-3.4
Manufacture of electrical equipment	C27	25.0	-39.8	9.1	10.5	0.9	7.2
Manufacture of machinery and equipment n.e.c.	C28	5.5	-7.1	0.7	6.0	-4.1	0.9
Manufacture of motor vehicles, trailers and semi-trailers	C29	5.8	-10.2	0.6	3.1	-2.0	-4.5
Manufacture of other transport equipment	C30	2.9	-7.7	4.6	-7.8	13.6	6.5
Manufacture of furniture	C31	-2.1	0.3	1.1	-3.7	3.0	-2.4
Other manufacturing	C32	14.6	-20.5	12.6	-6.7	4.3	-6.0
Repair and installation of machinery and equipment	C33	-5.9	-1.1	1.8	12.5	-3.6	-4.1
Electricity, gas, steam and air conditioning supply	D	29.9	0.7	-7.9	15.7	4.2	9.2
Electricity, gas, steam and air conditioning supply	D35	29.9	0.7	-7.9	15.7	4.2	9.2
Seasonally adjusted.							
* Preliminary data.							
'..' - Confidential data.							

Table 2

Changes of Industrial Production Indices compared to the same month of the previous year							
							(Per cent)
Economic activities	NACE.BG - 2008	XII.2025	I.2026	II.2026	III.2026	IV.2026	V.2026*
Industry	B_TO_E36	-6.7	-9.9	-8.7	4.7	-3.8	-4.8
Mining and quarrying	B	-22.3	-23.4	-23.2	-27.3	-33.6	-33.0
Mining of coal and lignite	B05
Extraction of crude petroleum and natural gas	B06
Mining of metal ores	B07	-12.4	-18.3	-22.0	-29.9	-38.9	-37.3
Other mining and quarrying	B08	2.3	-10.7	12.7	13.2	4.6	1.6
Mining support service activities	B09
Manufacturing	C	-1.2	-7.0	0.0	3.9	-0.3	-3.9
Manufacture of food products	C10	-9.7	-9.9	-0.3	8.2	3.9	-0.5
Manufacture of beverages	C11	1.6	-5.9	0.8	1.8	-6.8	-4.4
Manufacture of tobacco products	C12	36.2	66.6	47.3	22.3	3.4	12.7
Manufacture of textiles	C13	-13.2	-18.7	-3.8	-11.4	-5.8	-12.8
Manufacture of wearing apparel	C14	-2.8	-5.1	-5.9	-10.3	-4.2	-4.0
Manufacture of leather and related products	C15	1.5	-33.3	-23.1	-25.1	-32.0	-31.8
Manufacture of wood and of products of wood and cork, except furniture; manufacture of articles of straw and plaiting materials	C16	-10.0	-2.5	-15.3	-1.3	-7.4	5.1
Manufacture of paper and paper products	C17	-16.7	-2.3	-4.9	2.4	0.6	-2.3
Printing and reproduction of recorded media	C18	-4.2	-8.4	0.4	-6.3	6.9	-4.4
Manufacture of coke and refined petroleum products	C19
Manufacture of chemicals and chemical products	C20	-10.3	-1.4	0.5	1.8	5.6	-9.3
Manufacture of basic pharmaceutical products and pharmaceutical preparations	C21	-13.4	2.5	19.9	21.0	20.7	15.7
Manufacture of rubber and plastic products	C22	-10.5	1.3	3.5	3.6	1.7	8.2
Manufacture of other non-metallic mineral products	C23	-10.7	-18.1	-4.1	-4.0	6.7	-1.0
Manufacture of basic metals	C24	-3.3	13.8	15.2	5.3	4.9	4.6
Manufacture of fabricated metal products, except machinery and equipment	C25	-2.2	-15.0	5.5	-14.6	-25.9	-32.1
Manufacture of computer, electronic and optical products	C26	21.1	14.9	0.2	14.2	6.3	-2.7
Manufacture of electrical equipment	C27	57.7	-7.1	6.3	16.9	8.0	23.8
Manufacture of machinery and equipment n.e.c.	C28	11.7	1.6	-2.6	2.7	4.2	3.5
Manufacture of motor vehicles, trailers and semi-trailers	C29	10.1	-17.8	-15.8	-15.7	-15.6	-23.7
Manufacture of other transport equipment	C30	-15.8	-23.3	-31.6	-13.8	-16.7	-1.8
Manufacture of furniture	C31	11.6	16.2	8.4	-9.5	6.8	-3.7
Other manufacturing	C32	0.6	-4.9	-10.0	-1.4	-11.1	-16.3
Repair and installation of machinery and equipment	C33	-5.5	-16.9	-0.6	18.0	7.5	12.2
Electricity, gas, steam and air conditioning supply	D	-14.1	-18.5	-36.6	35.7	-10.3	8.8
Electricity, gas, steam and air conditioning supply	D35	-14.1	-18.5	-36.6	35.7	-10.3	8.8
Calendar-adjusted.							
* Preliminary data.							
!.' - Confidential data.							

Table 3

Industrial Production Indices (Seasonally adjusted, 2021 = 100)													
NACE.BG - 2008	V.2025	VI.2025	VII.2025	VIII.2025	IX.2025	X.2025	XI.2025	XII.2025	I.2026	II.2026	III.2026	IV.2026	V.2026*
B_TO_E36	93.4	91.6	91.6	91.9	94.5	92.3	91.0	90.9	87.6	89.0	93.7	89.4	89.2
B	83.9	97.3	86.4	93.9	89.9	78.2	96.1	81.9	66.5	62.6	61.4	55.7	56.7
B05
B06
B07	91.4	105.0	101.3	105.2	108.7	102.8	111.3	97.5	84.3	71.9	69.9	62.5	63.4
B08	76.2	73.5	76.6	79.5	76.5	71.1	74.6	79.1	76.9	76.5	82.3	80.9	77.3
B09
C	101.6	99.2	101.1	101.7	103.9	100.3	101.8	102.0	97.6	101.7	103.8	99.8	99.0
C10	91.6	88.8	89.9	89.6	85.2	84.5	90.1	90.0	86.8	88.0	95.8	93.6	91.4
C11	95.3	94.5	91.0	90.6	92.2	89.0	95.1	99.7	94.3	98.5	96.1	90.4	91.9
C12	102.2	99.2	92.6	87.9	103.6	85.5	88.2	110.5	123.8	118.1	111.4	111.8	114.9
C13	51.6	47.8	54.9	52.4	48.4	51.5	54.5	50.0	43.8	51.5	47.1	49.9	45.5
C14	72.5	77.8	71.2	70.3	70.6	73.7	70.3	73.6	72.6	72.0	67.2	72.3	69.6
C15	65.1	63.2	57.6	63.9	68.5	64.1	61.9	61.4	42.7	46.5	45.0	45.9	45.1
C16	78.7	78.5	77.6	78.6	81.1	76.3	77.8	82.0	84.7	73.9	82.4	76.9	82.2
C17	71.5	70.3	72.5	71.2	71.7	72.8	68.2	69.0	71.6	72.4	75.5	73.8	70.0
C18	91.9	93.0	88.1	90.2	87.8	88.9	81.4	87.3	84.1	88.3	87.3	94.6	87.5
C19
C20	98.5	89.1	92.2	96.8	91.9	84.8	89.1	91.4	95.7	94.3	94.5	96.0	89.4
C21	110.8	127.0	115.3	124.4	123.8	118.9	124.9	110.8	119.4	126.4	135.6	128.7	129.2
C22	79.7	81.0	78.4	77.3	80.2	77.8	82.3	77.2	81.6	82.6	83.1	83.4	85.2
C23	106.5	103.8	106.6	105.7	107.5	103.8	107.5	99.9	94.2	95.9	99.9	101.9	104.5
C24	72.9	70.8	77.2	73.4	77.6	82.1	81.2	72.5	81.5	84.3	79.3	77.0	77.5
C25	170.0	144.9	170.0	179.9	188.8	172.6	151.4	164.4	163.5	166.5	153.0	126.4	120.0
C26	102.6	108.4	102.2	107.6	124.4	109.9	114.0	130.0	107.2	109.1	134.4	106.8	103.2
C27	101.7	98.7	96.8	98.8	102.9	102.8	125.2	156.5	94.3	102.8	113.6	114.7	122.9
C28	94.8	93.2	91.8	99.0	96.7	95.5	97.3	102.6	95.3	96.0	101.8	97.6	98.5
C29	120.7	113.1	112.6	104.6	108.9	112.0	99.8	105.6	94.8	95.4	98.4	96.4	92.0
C30	98.0	87.8	68.0	65.7	89.9	97.7	81.9	84.2	77.7	81.3	75.0	85.2	90.7
C31	93.6	86.2	89.3	94.3	98.7	102.9	96.0	94.1	94.3	95.3	91.8	94.6	92.3
C32	130.5	113.6	128.9	111.8	125.1	134.0	116.8	133.8	106.4	119.8	111.7	116.5	109.6
C33	99.9	117.0	118.4	125.8	131.5	102.1	114.1	107.4	106.3	108.2	121.7	117.4	112.5
D	67.7	63.2	63.1	53.8	62.3	68.6	44.9	58.4	58.8	54.2	62.7	65.3	71.3
D35	67.7	63.2	63.1	53.8	62.3	68.6	44.9	58.4	58.8	54.2	62.7	65.3	71.3
* Preliminary data.													
... Confidential data.													

Table 4

Industrial Production Indices (Calendar-adjusted, 2021 = 100)													
NACE.BG - 2008	V.2025	VI.2025	VII.2025	VIII.2025	IX.2025	X.2025	XI.2025	XII.2025	I.2026	II.2026	III.2026	IV.2026	V.2026*
B_TO_E36	89.1	92.9	94.4	89.7	96.8	98.1	95.4	94.9	81.8	82.8	96.1	85.7	84.9
B	76.8	93.9	82.5	94.2	96.9	85.5	104.0	92.6	63.2	57.7	59.5	50.1	51.4
B05
B06
B07	91.4	113.6	96.5	112.6	117.7	97.8	122.5	108.7	75.5	66.1	66.8	55.3	57.3
B08	79.2	78.6	80.5	83.5	81.4	79.9	83.8	80.4	56.1	59.4	78.8	79.6	80.4
B09
C	100.7	103.3	104.9	98.4	106.9	108.4	106.5	101.4	86.9	93.2	107.8	97.6	96.8
C10	90.3	89.2	89.8	91.2	88.2	93.4	94.2	93.0	78.6	76.8	95.9	91.0	89.8
C11	97.1	113.1	111.3	110.5	103.5	81.4	87.6	96.5	70.1	73.1	88.0	86.7	92.9
C12	119.4	121.1	118.1	90.2	114.6	89.0	81.3	100.6	88.1	93.3	117.9	131.6	134.6
C13	54.9	50.9	56.4	43.8	49.2	54.7	58.9	44.7	38.7	52.1	50.1	50.9	47.8
C14	65.5	85.0	80.4	65.6	69.3	78.2	72.4	71.8	76.8	72.7	65.0	66.8	62.9
C15	62.0	67.9	61.9	51.2	68.7	71.5	71.4	57.7	41.8	45.0	46.8	45.8	42.3
C16	81.7	82.0	82.3	75.9	84.1	81.0	84.4	77.7	74.2	65.5	84.5	76.6	85.8
C17	71.1	74.0	76.6	66.4	72.0	81.2	73.4	62.5	67.6	67.4	78.9	71.4	69.5
C18	92.0	97.1	86.8	83.4	84.2	95.2	91.6	92.9	74.9	79.8	89.6	95.2	88.0
C19
C20	97.8	91.5	93.0	92.7	90.8	85.0	91.7	90.5	90.4	89.6	103.6	97.8	88.7
C21	107.2	141.8	112.1	116.1	116.2	125.9	131.2	110.1	116.8	115.3	151.2	128.2	124.0
C22	79.2	85.5	81.7	72.3	82.9	84.1	86.3	69.3	75.6	78.2	87.6	83.2	85.7
C23	112.9	109.0	115.6	108.7	113.1	113.7	115.3	92.2	69.5	79.8	99.1	102.5	111.8
C24	75.6	72.4	78.2	66.8	76.5	89.6	86.9	63.0	80.7	82.8	84.6	76.7	79.1
C25	166.6	147.3	182.9	177.7	192.5	184.0	164.0	169.5	130.7	147.3	154.4	125.6	113.1
C26	98.7	114.5	104.8	94.5	128.3	122.1	120.6	126.3	98.2	104.9	146.0	102.9	96.0
C27	95.5	106.1	100.2	91.4	105.8	108.7	128.2	136.6	85.2	102.0	119.9	116.6	118.3
C28	92.9	98.1	93.6	87.7	98.5	103.5	101.8	100.0	85.1	93.1	110.5	98.6	96.2
C29	119.4	116.5	106.6	92.1	108.1	119.4	106.6	93.5	95.1	96.8	105.9	97.0	91.0
C30	98.0	91.3	62.9	59.4	88.7	112.8	79.9	75.5	62.5	85.0	70.4	92.0	96.2
C31	93.6	90.7	91.8	89.8	99.7	111.9	100.3	91.1	81.5	91.0	93.3	93.9	90.1
C32	129.1	129.0	130.5	110.0	130.3	149.0	124.1	123.1	90.5	105.6	111.7	113.4	108.1
C33	93.6	120.6	120.0	123.3	141.0	106.5	124.2	141.9	78.4	91.4	121.8	106.7	105.0
D	51.3	52.4	59.8	52.6	58.0	65.8	49.1	70.2	71.1	57.5	72.4	56.9	55.8
D35	51.3	52.4	59.8	52.6	58.0	65.8	49.1	70.2	71.1	57.5	72.4	56.9	55.8
* Preliminary data.													
*** Confidential data.													